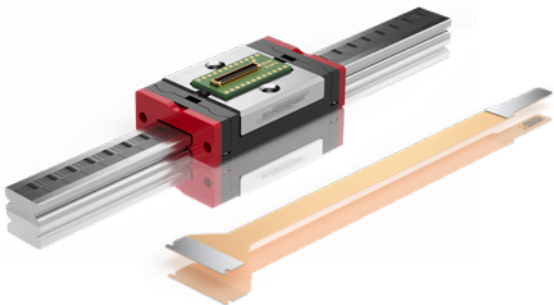


SCHNEEBERGER ABSOLUTE MEASURING SYSTEM

The new SCHNEEBERGER absolute measuring system is another step into Industrial 4.0 linear bearings.



Key features

- All-In-One Solution
- Diminutive in size, great in accuracy
- Plug & Play

With it, you can use 3 out of 5 interfaces simultaneously
BiSS/SSI, ABZ, UVW, SPI, analog Sin/Cos.

Available from the smallest linear miniature guide MINIRAIL Size 5.

Technical Information

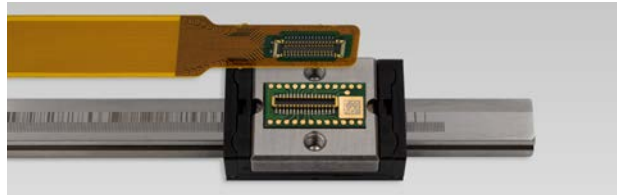
Graduation scale directly laser-engraved on to the guide rail

- Calibrated parameter values stored on the sensor's internal EEPROM
- Sensor with miniature connector
- Customer specific flexprint design
- Signal conditioning (offset, amplitude, phase) with autocalibration
- Linear resolution 100 nm
- Absolut position accuracy: $< 2 \mu\text{m}$ (3-Sigma)
- Sensor dimension: $9.9 \times 5.0 \times 1.1 \text{ mm}$
- Patent pending

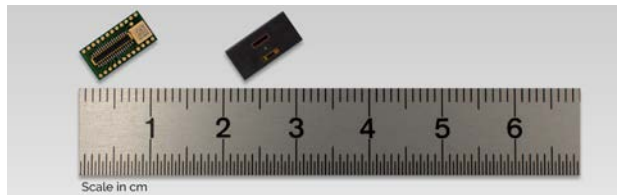
Offering a customized
Flexprint for all your needs



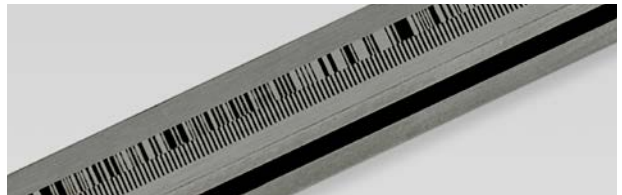
Smart Plug Connection
for FPCs



The smallest integrated
absolute sensor



Laser-engraved graduated
scale on the rail



SCHNEEBERGER

www.schneeberger.com

