

## ALWAYS ONE STEP AHEAD

SCHNEEBERGER is unique in the global linear motion technology market and offers the basis for a dynamic, customer oriented and successful business strategy. SCHNEEBERGER has established a new standard in measurement guidance and is one of the leading names, leaders and the benchmark when it comes to ground-breaking innovations in the field of linear technology.

SCHNEEBERGER designs and builds complete systems, our customers benefit from our expertise in developing and producing components. Not only because we manufacture these components ourselves and we in a position to perfect them with 100

years in Linear motion control. SCHNEEBERGER is the linear motion supplier of choice for original equipment manufacturers (OEMs) that demand the greatest machine precision matched with the lowest cost of ownership.

## INDUSTRIES

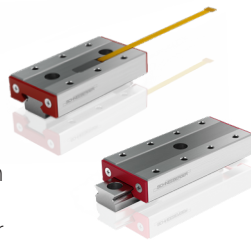
- Machine Tool Industry
- Medical technology
- Semi-Conductor Industry
- Test- & Measurement Industry
- Many Additional Markets and Industries

# PRODUCT OFFERINGS

## ANTI-FRICTION GUIDEWAYS

### MINISLIDE MSQ MICRO FRICTION-LESS TABLE

- Sizes 7, 9, 12, 15
- Compact and robust
- Integrated anti-cage creep system
- Highest rigidity and accuracy
- Vacuum-compatible to 10-9 mbar
- Maximum speed of 3 m/s
- Max acceleration 300 m/s



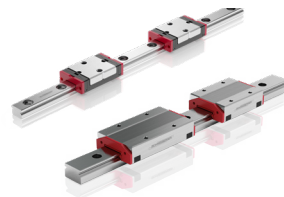
### MINISCALE PLUS AND MINISLIDE MSQ SCALE WITH INTEGRATED MEASURING SYSTEM

- MINISCALE PLUS: based on the miniature guideway MINIRAIL.
- Sizes 7, 9, 12, 15, 14, 18, 24, 42
- MINISLIDE MSQscale: based on the miniature guideway MSQscale
- Sizes 7, 9, 12, 15
- Resolution 0.1 μm



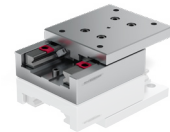
### MINIRAIL MINIATURE GUIDEWAYS

- Sizes 5, 7, 9, 12, 15, 14, 18, 24, 42
- Low pulsation
- Max. speed 5 m/s (size 5, 3m/s)
- Max. acceleration 300 m/s<sup>2</sup> (size 5, 250m/s)



### MICRO FRICTIONLESS TABLES

- Single axis models
- With roller cages
- For highest accuracy requirements
- Suitable for high-speed applications
- Available in aluminium



More information



## CUSTOMIZED BEARINGS AND GEAR RACKS

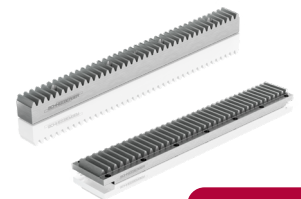
### CUSTOMIZED BEARINGS

- Our machining capability and capacity is best suited to producing flat and V shape profiles in any cross section
- The rail profiles are induction or through-hardened



### GEAR RACKS

- Gear racks are an economic drive solution
- For any cross section up to Module 20



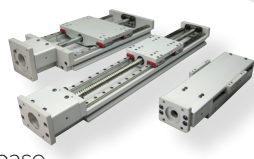
More information



## SLA

SLA25, SLA33, SLAW33

- Different motor flanges
- Lightweight precision aluminium base
- Easy assembly, stackable, without additional brackets
- Extreme flexibility Clean Room prep
- Brake and linear encoder options



## BALL SCREWS

- From Ø 32 mm up to Ø 160 mm
- Precision ground ball screws (spindle and nut system)
- Single and double nuts (preloaded, diff. wiper systems)
- All requirements (minimum wear, long life cycle, non interrupted installation surface for fixed bearing)



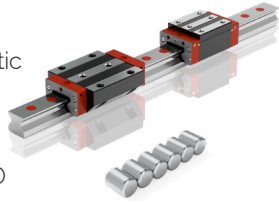
More information



## PROFILED LINEAR GUIDEWAYS MONORAIL

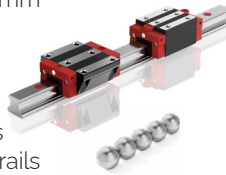
### MONORAIL MR

- High rigidity, high dynamic and static load carrying capacity
- Outstanding running smoothness and total enclosure of the carriage
- Sizes 25, 30, 35, 45, 55, 65 and 100
- 8 different carriage types
- Single-piece system length up to 6000 mm



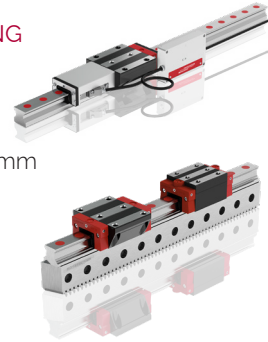
### MONORAIL BM

- Smooth running, low pulsation, reduced friction values and high travelling speeds
- Sizes 20, 25, 30, 35, 45 up to 6000 mm rails
- Size 15 up to 3000 mm rails
- Width variance on different carriage types



### MONORAIL WITH INTEGRATED MEASURING SYSTEM AMS

- Integrated magneto-resistive measuring system
- Single-piece system length up to 6000 mm
- Absolute distance measurement
- Reader head runs over rail butt-joints enables measuring axes of any length



### MONORAIL BZ

- High-precision linear guide systems with integral rack drive
- Sizes 25 and 35
- Single-piece system length up to 6000 mm
- Toothed rack in a high quality (hardened and ground)

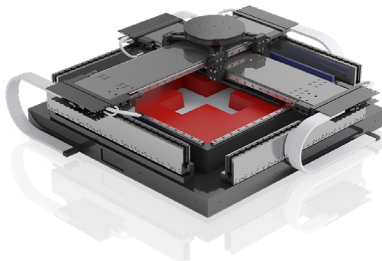
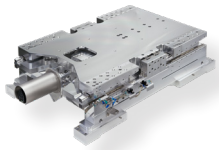
More information



## POSITIONING SYSTEMS

### MOTION SYSTEMS FOR DEMANDING APPLICATIONS

- Differentiation through technological leadership and operational excellence
- Customized solutions built to specification
- Designed to what you need
- Regular environment, clean room or vacuum
- Stable, fast, accurate, repeatable
- From design up to serial production



More information

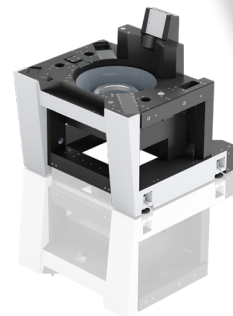


## MINERAL CASTING

### COMBINING LINEAR TECHNOLOGY WITH MINERAL CASTING OFFERS UNBEATABLE CUSTOMER BENEFITS

SCHNEEBERGER is a leading global manufacturer of mineral castings. As well as innovative and high precision mineral casting solutions. Depending on the customer's requirements, these can be equipped with the following components:

- Linear bearings
- Linear motors
- Drive units
- Electronics and sensor technology



More information



## LINEAR BEARINGS WITH ROLLERS, BALLS OR NEEDLE CAGES

### LINEAR BEARINGS R WITH BALLS OR ROLLER CAGES

- Standardized through hardened cross roller bearings.



### LINEAR BEARINGS RN/RNG

- Standardized through hardened crossroller bearings
- For increased load capacity.
- With or without integrated cage assist



### LINEAR BEARING N/O

- Standardized needle linear bearings N/O for highest load capacity, forces and moment

### MINISLIDE MS, ND & NDN

- For highest accuracy requirement
- With balls cage for small to medium loads
- Cage centering system
- MS with gothic arc profile for 15 times higher load than 90° V-profile
- Vacuum compatible down to 10-7 mbar
- For short stroke applications / Ceramic balls
- For high speed applications



More information



## USA

SCHNEEBERGER Inc.  
44 Sixth Road | Woburn, MA 01801-1759  
Phone +1 781 271 0140 | Fax +1 781 932 4127  
E-Mail: info-usa@schneeberger.com

www.schneeberger.com